



Williamson County Association of REALTORS® Announces December Housing Numbers

January 7, 2010 (Franklin, TN)—The Williamson County Association of REALTORS® today announces the sale of homes statistics for Williamson County, Tn. for the month of December 2009. There were 218 residential and condominium closings reported for the month of December, according to figures provided by RealTracs Solutions, the multiple listing service used by REALTORS® in the Middle-Tennessee area.

Compared to December of 2008, the single family residential closings increased 31 percent and the median price increased by eight percent. Condominiums closings have decreased by six percent and the median price decreased by 24 percent.

Overall for 2009, the median residential home price was \$343,750 and there were 2,374 single family home closings in Williamson County. This was a six percent decrease in home price compared to 2008 and a seven percent decrease in closings.

December 2009

	<u>Closings</u>	<u>Median Price</u>	<u>Average Price</u>	<u>DOM</u>
Residential	203	\$ 365,650	\$ 435,271	100
Condominium	15	\$ 159,900	\$ 190,040	89

December 2008

	<u>Closings</u>	<u>Median Price</u>	<u>Average Price</u>	<u>DOM</u>
Residential	155	\$ 340,000	\$ 411,406	88
Condominium	16	\$ 209,500	\$ 206,448	94

December 2007

	<u>Closings</u>	<u>Median Price</u>	<u>Average Price</u>	<u>DOM</u>
Residential	247	\$ 385,757	\$ 471,523	74
Condominium	58	\$ 198,732	\$ 217,309	51

December 2006

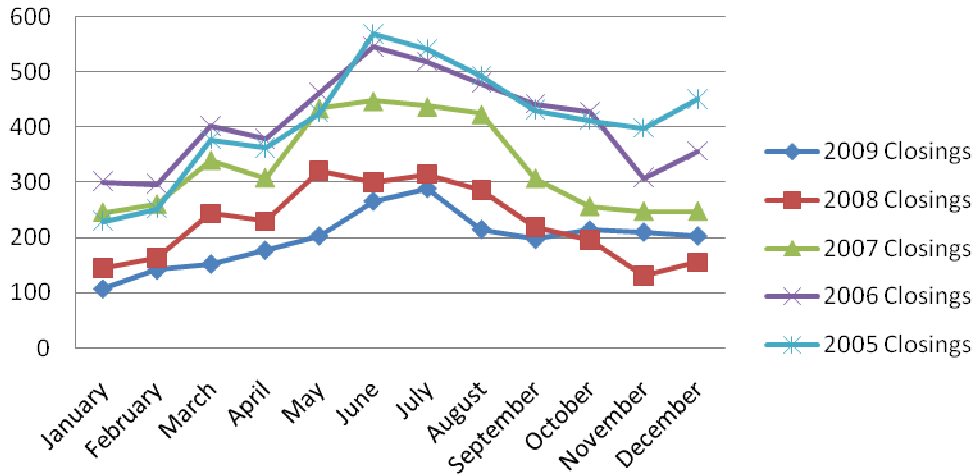
	<u>Closings</u>	<u>Median Price</u>	<u>Average Price</u>	<u>DOM</u>
Residential	356	\$ 394,900	\$ 456,445	53
Condominium	57	\$ 190,000	\$ 213,643	49

December 2005

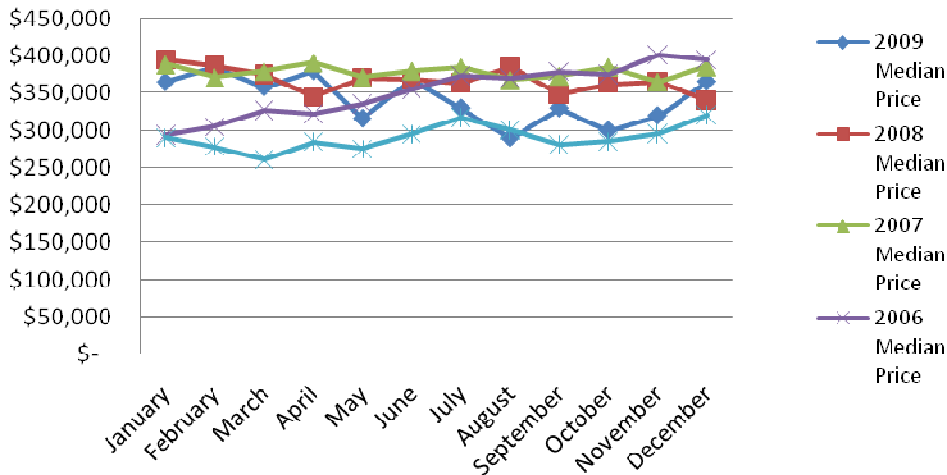
	<u>Closings</u>	<u>Median Price</u>	<u>Average Price</u>	<u>DOM</u>
Residential	450	\$ 320,704	\$ 414,290	50
Condominium	46	\$ 144,950	\$ 180,452	31

"The second straight month of increased sales is very encouraging for those sellers who have their home on the market and those who are thinking about putting their home on the market. Although the total number of sales was down in 2009 vs. 2008, it looks like we are beginning to see more confidence from consumers. If we see an increase in the January stats, we may have a new trend for 2010" said Karen Baker, 2010 President of the Williamson County Association of REALTORS®.

Williamson County Single Family Closings



Williamson County Single Family Median



The Williamson County Association of REALTORS® is the professional trade organization servicing the real estate industry in Williamson County. Established in 1962, the association provides professional development and support services for real estate professionals. The association has over 1,400 members and is headquartered in Franklin, Tn.



Media Inquiries:

Theresa Wilson, CAE

Executive Vice President

Williamson County Association of REALTORS®

840 Crescent Centre Drive, Suite 120

Franklin, TN 37067

www.williamsoncountyrealtors.org

p: 615-771-6845

f: 615-771-6621

m: 615-557-7197